



SMARTER ENTERPRISE SECURITY

ganzsecurity.com/cortrol



CORTROL is available in two editions and offers various customization options and responsive technical support, providing a seamless and personalized user experience for every organization.



CORTROL PREMIER

SINGLE SERVER INSTALLATION
LAYERED DATA SECURITY

CORTROL Premier is ideal for small to medium-sized businesses. It integrates video analytics and comprehensive surveillance capabilities, utilizing multiple data sources and various access control integrations. Key features include interactive maps with alarm linking, a powerful event and action manager, and CVA AI analytics.

- Software Watchdog
- Fallback Storage
- Failover Clusters
- Archive Replication
- Server Mirroring
- End-to-end data encryption
- Data Corruption protection
- Distributed Databases

CORTROL GLOBAL

ENTERPRISE SOLUTION
CENTRALIZED SYSTEM MANAGEMENT

CORTROL Global, built with the Premier core, is a comprehensive enterprise-level VMS solution that includes enterprise-level failover, video wall support, and multi-server deployment. Central server governance simplifies the administration of multiple servers.

- Flexible User Permissions
- Leading Performance
- Detailed Audit
- System Health Monitoring
- Secure AD, LDAP and OAuth 2.0
- Unlimited Servers and Clients
- Easy Licensing

CORTROL has over 15,000 integrations from over 190 manufacturers.



CVA

CVA AI ANALYTICS

CORTROL provides fully integrated add-on CVA modules native to the CORTROL ecosystem. These highly efficient and scalable GPU-based analytics plugins deliver exceptional performance.

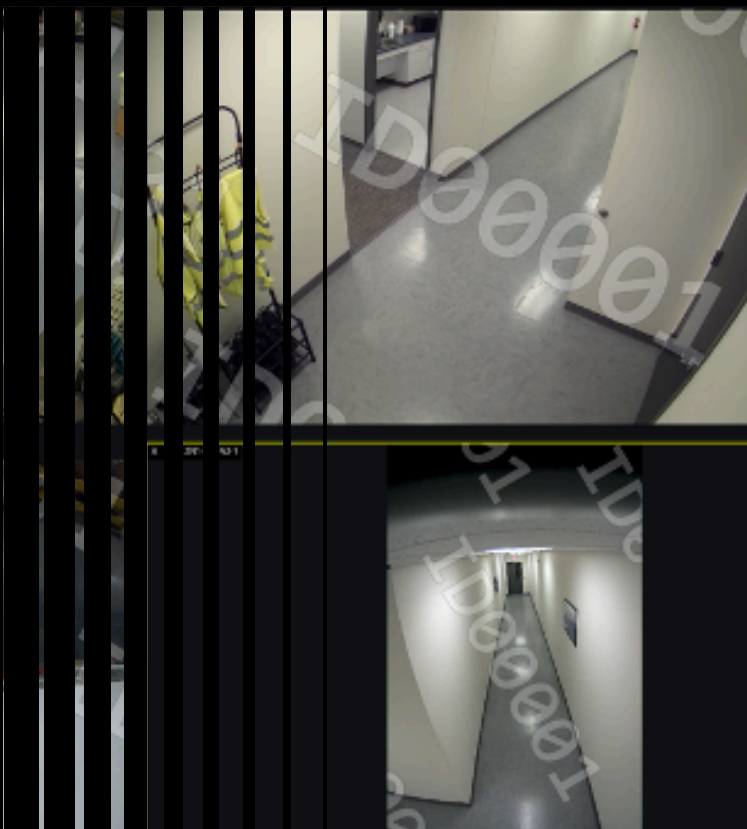
- License Plate Recognition
- Facial Recognition
- Smart Tracking
- Object Detection
- Gun Detection
- PPE Detection
- Traffic Analysis
- UIC & Container Recognition
- Hard Hat Detection
- Smart Parking



CL

CROSSLINK VNC

CORTROL CrossLink provides the ability to add web pages and remote control of third-party workstations using VNC server technology. Two license options are available: Basic and Advanced.



THE CORE COMMAND CENTER OF YOUR SECURITY INSTALLATION.



Event & Action Manager

CORTROL automates and accelerates responses with the pre-programmed event and action manager when an immediate response is necessary—delivering enhanced situational awareness, optimizing incident management, and creating a safer environment.



Integrations

CORTROL delivers collaborative data management, including video, access control, security, HSE, POS, analytics metadata, and other related areas like intelligent warehousing, traffic control, volumetric surveillance, SCADA, OPC, MQTT, IoT, GSM, and more - all on an NDA Compliant, user-friendly platform.



Mobile Geomapping

CORTROL Global can turn a smartphone into a GPS security tracker (ideal for tracking and the safety of students, children, etc.). Equipped with a panic button, and can send live video with Geolocation in critical situations.



Private Cloud

Smart City applications require open, ubiquitous data owned by the city. CORTROL Global's virtual machine option lets you have a private cloud, simultaneously satisfying those enigmatic requirements.



Folders

Folders introduce hierarchical resource management for multi-site installations. The folders act in parallel with Groups and Permissions, adding a logical security layer and enhancing resource organization (CORTROL Global).

Specifications are subject to change without notice.

For the latest product information and release notes, go to ganzsecurity.com/cortrol

