

Motorized FA lens  
can be easily operated with a single USB cable

# Lens onnect<sup>®</sup> SERIES



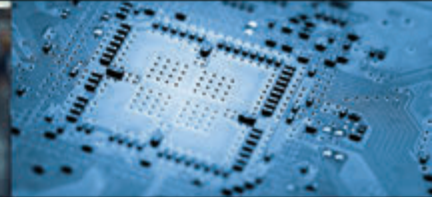
Remote adjustment of inaccessible equipment and out-of-reach positions



Precise modifications that do not require manual adjustment.



Ideal for changing the focus position and WD settings for objects of various heights.



Suitable for embedded systems.

**Focus, iris, zoom remote control via USB cable.**

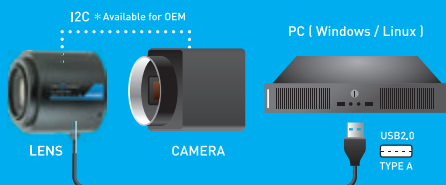
**Easy to operate where manual adjustment is not possible.**

**Precise adjustment by stepping motor.**

**Easy operation, just plug and play.**

**Wide selection of models.**

How to connect



\*Non-USB interfaces will also be supported.

I2C interface can be used with LensConnect-compatible cameras.



DL-MPY series



VL-MPZ series



Varifocal series



Telecentric Lens



**computar**

# LensConnect Series | LINE UP

## DL-MPY series

DL0828UC/SC-MPY		DL1224UC/SC-MPY		DL1623UC/SC-MPY	
Focal Length	8mm	Focal Length	12mm	Focal Length	16mm
F-Number	F2.8 - F16.0	F-Number	F2.4 - F16.0	F-Number	F2.3 - F16.0
Working Distance	0.1m - Inf	Working Distance	0.1m - Inf	Working Distance	0.11m - Inf
Angle of View [1/1.1"]	69.4° x 53.8° (Diagonal 80.4°)	Angle of View [1/1.1"]	50.5° x 38.1° (Diagonal 60.2°)	Angle of View [1/1.1"]	38.9° x 29.0° (Diagonal 47.0°)
Mount	C	Mount	C	Mount	C
Sensor Size	1/1.1"	Sensor Size	1/1.1"	Sensor Size	1/1.1"
Resolution	12MP	Resolution	12MP	Resolution	12MP
Filter Size	M52 x P0.75mm	Filter Size	M35.5 x P0.5mm	Filter Size	M35.5 x P0.5mm
Dimensions	φ 59.5mm x 63.3mm	Dimensions	φ 59.5mm x 57.9mm	Dimensions	φ 59.5mm x 59.2mm
Weight	178g	Weight	163g	Weight	173g

DL2523UC/SC-MPY		DL3525UC/SC-MPY		DL5028UC/SC-MPY	
Focal Length	25mm	Focal Length	35mm	Focal Length	50mm
F-Number	F2.3 - F16.0	F-Number	F2.5 - F16.0	F-Number	F2.8 - F16.0
Working Distance	0.12m - Inf	Working Distance	0.16m - Inf	Working Distance	0.2m - Inf
Angle of View [1/1.1"]	25.3° x 18.7° (Diagonal 31.0°)	Angle of View [1/1.1"]	18.2° x 13.4° (Diagonal 22.5°)	Angle of View [1/1.1"]	13.2° x 9.7° (Diagonal 16.3°)
Mount	C	Mount	C	Mount	C
Sensor Size	1/1.1"	Sensor Size	1/1.1"	Sensor Size	1/1.1"
Resolution	12MP	Resolution	12MP	Resolution	12MP
Filter Size	M30.5 x P0.5mm	Filter Size	M30.5 x P0.5mm	Filter Size	M30.5 x P0.5mm
Dimensions	φ 59.5mm x 56.9mm	Dimensions	φ 59.5mm x 57.9mm	Dimensions	φ 59.5mm x 58mm
Weight	166g	Weight	160g	Weight	173g

## Varifocal Series

VL6Z1626UC/SC-MPYIR		VL2Z2533UM6C/SM6C-MPWIR		ML3Z1226UC/SC-MPW	
Focal Length	16mm - 96mm	Focal Length	25mm - 50mm	Focal Length	12mm - 36mm
F-Number	F2.6 - F16C	F-Number	F3.3-F16C	F-Number	F2.6 - F16C
Working Distance	3m - Inf	Working Distance	1m - Inf(Wide), 3m - Inf(Tele)	Working Distance	0.1m - Inf(Wide), 0.35m - Inf (Tele)
Angle of View[1"]	Wide 48.1° x 35.6° (Diagonal 58.9°) Tele 8.5° x 6.3° (Diagonal 10.4°)	Angle of View[1"]	Wide 28.8° x14.7° (Diagonal 35.9°) Tele 1.6° x11.1° (Diagonal 18.3°)	Angle of View[2/3"]	Wide 41.1° x 31.2° (Diagonal 50.4°) Tele 13.7° x 10.4° (Diagonal 16.9°)
Mount	C	Mount	C	Mount	C
Sensor Size	1.1"	Sensor Size	1"	Sensor Size	2/3"
Resolution	12MP	Resolution	9MP	Resolution	9MP
Filter Size	M67 x P0.75mm	Filter Size	M52 x P0.75mm	Filter Size	M49 x P0.75mm
Dimensions	78.2mm x 83.8mm x 108.96mm	Dimensions	φ 59.5mm x 88.1 mm	Dimensions	φ 59.5mm x 79.8mm
Weight	330g	Weight	269g	Weight	247g

ML2Z0525UC/SC-MPWIR		EL3Z0416UCS/SC-MPWIR		EL6Z0915UCS/SCS-MPWIR	
Focal Length	5.5mm - 12.7mm	Focal Length	4.0mm - 10mm	Focal Length	9mm - 50mm
F-Number	F2.5 - F16C	F-Number	F1.6 - F16C	F-Number	F1.5 - F16C
Working Distance	0.1m - Inf	Working Distance	0.2m - Inf	Working Distance	3m - Inf
Angle of View [2/3"]	Wide 86.0° x 65.6° (Diagonal 105.2°) Tele 40.1° x 30.3° (Diagonal 49.6°)	Angle of View [1/1.8"]	Wide 115.9° x 61.7° (Diagonal 138.1°) Tele 46.0° x 25.8° (Diagonal 52.9°)	Angle of View [1/1.8"]	Wide 46.1° x 26.3° (Diagonal 52.5°) Tele 9.0° x 5.2° (Diagonal 10.2°)
Mount	C	Mount	CS	Mount	CS
Sensor Size	2/3"	Sensor Size	1/1.8"	Sensor Size	1/1.8"
Resolution	9MP	Resolution	5MP	Resolution	5MP
Filter Size	M55 x P0.75mm	Filter Size	*M55 x P0.75mm (With VM0418)	Filter Size	*M67xP0.75mm (With VM0918)
Dimensions	φ 59.5mm x 66.9mm	Dimensions	φ 66mm x 59mm	Dimensions	78.2mm x 83.8mm x 104.8mm
Weight	172g	Weight	161g	Weight	299g

[\*] When using filters, please use VM0418 (sold separately).

[\*] When using filters, please use VM0918 (sold separately).

## VL-MPZ series

VL0826U/S-MPZ		VL1226U/S-MPZ		VL1624U/S-MPZ	
Focal Length	8mm	Focal Length	12mm	Focal Length	16mm
F-Number	F2.6 - F16.0	F-Number	F2.6 - F16.0	F-Number	F2.4 - F16.0
Working Distance	0.1m - Inf	Working Distance	0.1m - Inf	Working Distance	0.1m - Inf
Angle of View [1"]	76.9° x 61.5° (Diagonal 88.8°)	Angle of View [1"]	56.7° x 44.1° (Diagonal 67.4°)	Angle of View [1"]	43.8° x 33.6° (Diagonal 53.2°)
Mount	C	Mount	C	Mount	C
Sensor Size	1"	Sensor Size	1"	Sensor Size	1"
Resolution	20MP	Resolution	20MP	Resolution	20MP
Filter Size	*M82 x P0.75mm (With ZM0810)	Filter Size	M46 x P0.75mm	Filter Size	M43 x P0.75mm
Dimensions	φ 78mm x 52.93mm	Dimensions	φ 75mm x 48.5mm	Dimensions	φ 75mm x 52mm
Weight	334g	Weight	273g	Weight	280g

[\*] When using filters, please use ZM0810 (sold separately).

VL2520U/S-MPZ		VL3522U/S-MPZ		VL5024U/S-MPZ		VL7531U/S-MPZ	
Focal Length	25mm	Focal Length	35mm	Focal Length	50mm	Focal Length	75mm
F-Number	F2.0 - F16.0	F-Number	F2.2 - F16.0	F-Number	F2.4 - F16.0	F-Number	F3.1 - F16
Working Distance	0.15m - Inf	Working Distance	0.2m - Inf	Working Distance	0.2m - Inf	Working Distance	0.25m - Inf
Angle of View [1"]	28.8° x 21.8° (Diagonal 35.5°)	Angle of View [1"]	20.8° x 15.7° (Diagonal 25.8°)	Angle of View [1"]	14.6° x 11.0° (Diagonal 18.2°)	Angle of View [1"]	9.8° x 7.3° (Diagonal 12.2°)
Mount	C	Mount	C	Mount	C	Mount	C
Sensor Size	1"	Sensor Size	1"	Sensor Size	1"	Sensor Size	1"
Resolution	20MP	Resolution	20MP	Resolution	20MP	Resolution	20MP
Filter Size	M46 x P0.75mm	Filter Size	M43 x P0.75mm	Filter Size	M43 x P0.75mm	Filter Size	M43 x P0.75mm
Dimensions	φ 78mm x 47mm	Dimensions	φ 75mm x 66.1mm	Dimensions	φ 75mm x 66.5mm	Dimensions	φ 75mm x 87mm
Weight	257g	Weight	313g	Weight	326g	Weight	415g

DL-MPY series  
Varifocal series  
Click Here  
For More Info →



VL-MPZ series  
Click Here  
For More Info →



LensConnect<sup>®</sup>  
SERIES  
Click Here  
For Special Site →

